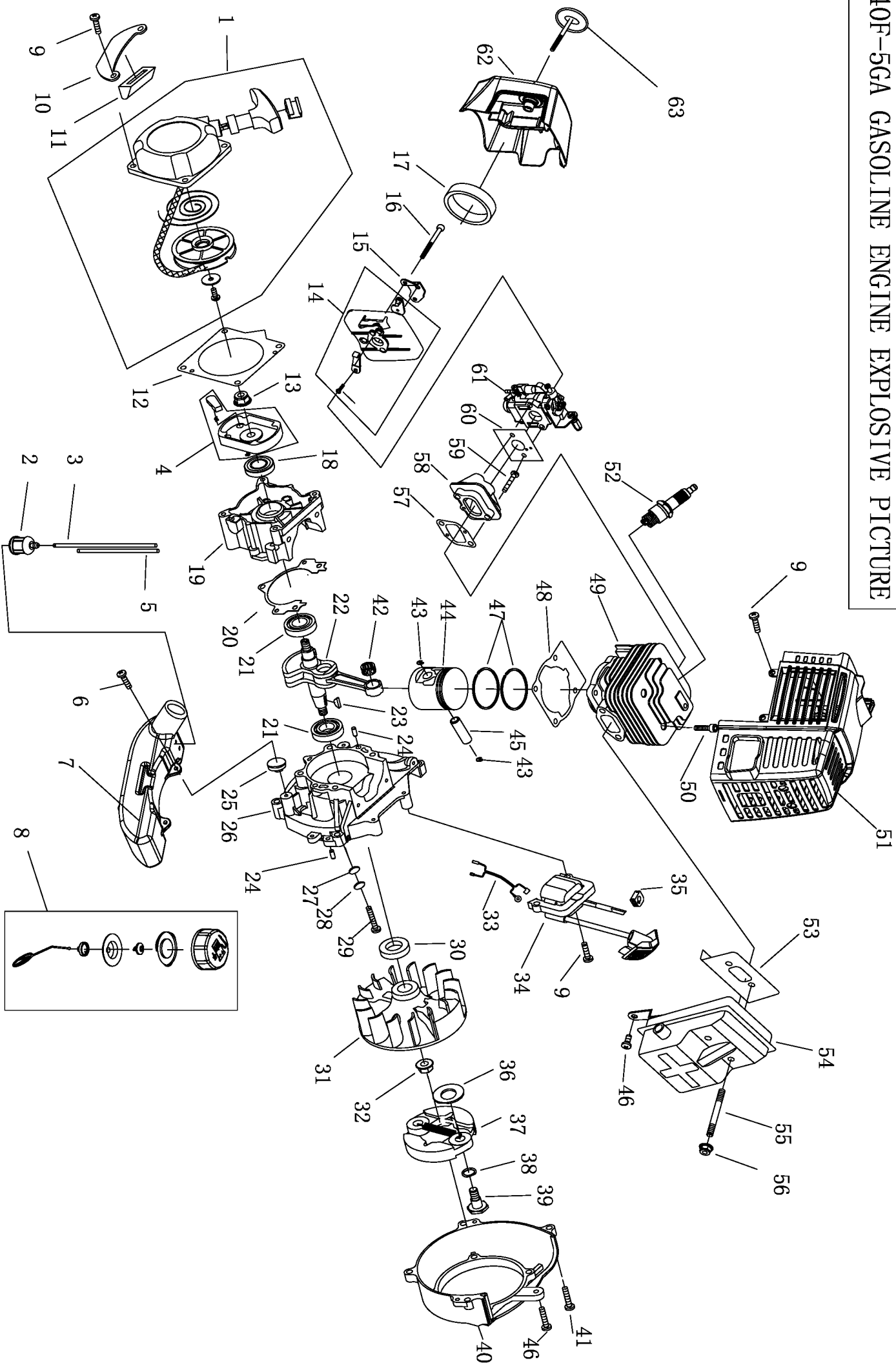


1E40F-5GA 分解图
 1E40F-5GA GASOLINE ENGINE EXPLOSIVE PICTURE



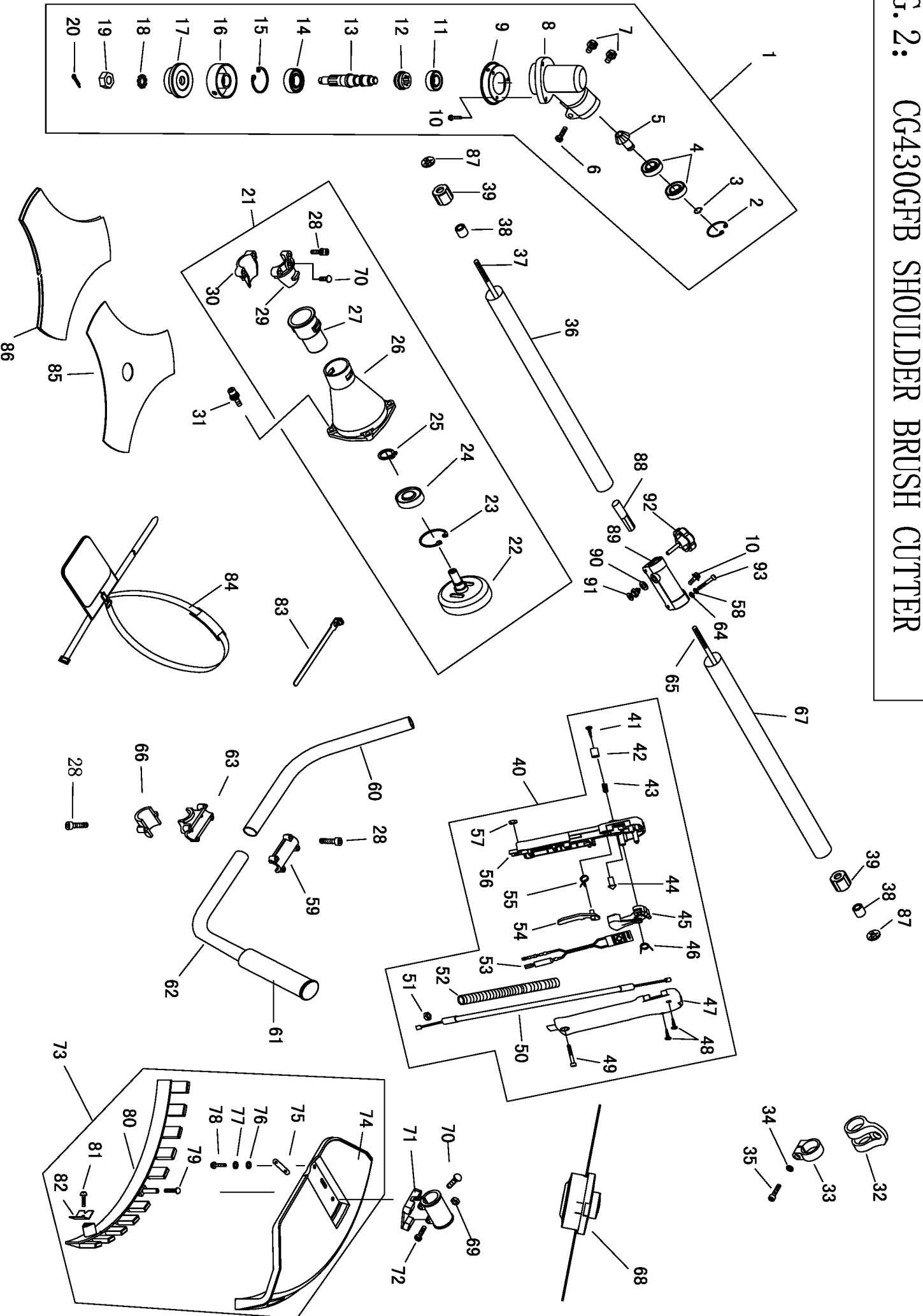
1E40F-5GA

Appendix List Engine Parts of Attached Fig.

	Part N		Part Name	
1	02050070030	7972	Starter	1
2	02050120002	0554	Fuel Filter	1
3			Fuel Pipe	1
4	02050100006	7973	Start Reel Assy	1
5			Fuel Pipe	1
6	03020020027	3004	Screw M5×16	2
7	70050030073	4259	Fuel Tank	1
8	02110020026	7560	Fuel Tank Lid Assy	1
9	03020020012	1848	Screw M5×20	6
10	02020160432	2871	Stand	1
11	02080020087	1403	Rubber Cover	1
12	02010030018	0736	Gasket,Starter	1
13	03030010017	5610	Nut M8 (8*1.25)	1
14	70030040012	7714	Inside Cover Assy	1
15	02020160533	4432	Baffle Plate	1
16	03020020044	5483	Screw M5×55	2
17	02090010044	4431	Filter Element	1
18	03100010009	0047	Oil Seal	1
19	70070050054	0657	Rear Crank Case	1
20	02070010124	0635	Gasket	1
21	03090010016	1787	Bearing 6202/P5	2
22	02020120037	0642	Crank Shaft	1
23	03070010002	4563	Key 3×13	1
24	03060010004	4569	Pin B4×10	4
25	02070020046	1947	Gasket,Fuel tank	2
26	70070050055	0656	Front Crank Case	1
27	03040020020	6536	Plain Washer GB97 5	4
28	03050010015	7813	Spring Washer GB93 5	4
29	03010010046	4373	Screw GB70. 1	4
30	03100010024	0641	Oil Seal	1
31	02050030073	2260	Flywheel	1

32	03030050010	5485	Nut M8	1
33	02050050181	2104	Stop Line	1
34	02050030118	4267	Stator	1
35	02080020012	1622	Plug	1
36	03040050048	4546	Washer B	2
37	02050160006	5800	Expander Combination	1
38	03040050043	4549	Washer	2
39	02020130003	0737	Screw Pin	2
40	80010020071	9115	Fan Cover	1
41	80010020071	2322	BoltGB9074.13 M5×25	4
42	03090020022	0640	Bearing	1
43	02020030014	4550	Ring	2
44	02010020012	0639	Piston	1
45	02020010009	0629	Piston Pin	1
46	03020020053	2323	Bolt M5×12	2
47	02020020008	0397	Piston Ring	2
48	02070010037	0631	Cylinder Gasket	1
49	70070130019	8680	Cylinder	1
50	03010010062	5711	Screw M5×20	4
51	70030030530	9486	Housing Ass'y	1
52	03130010013	3480	Spark Plug	1
53	02070010165	0633	Muffler Gasket	1
54	02050010040	0638	Muffler	1
55	03010050006	0643	Bolt	2
56	03030050003	2324	Nut GB6177 M6	2
57	70030020015	0634	Insulator Gasket	1
58	02070010086	0647	Insulator	1
59	03020020034	4335	Screw GB9074.4 M5×25	2
60	02070010073	0632	Carburetor Gasket	1
61	02050020020	3683	Carburetor	1
62	70030040107	1445	Outside Cover	1
63	02110030079	4452	Knob	1

FIG. 2: CG430GFB SHOULDER BRUSH CUTTER



(T436 BRUSH CUTTER)

Ser. NO.	part N	ERP Erp NO.	Part Name	Qty
1-1	61270030006	1987	GEAR CASE ASS'Y	1
1-2	03120020002	4536	Stop Ring 26	1
1-3	03120010001	4531	Stop Ring 10	1
1-4	03090010015	0762	Bearing 6000-2RS/P5	2
1-5	02020090072	2705	Pinion	1
1-6	03020030014	2322	Screw M5×25	1
1-7	03020030021	7550	Bolt M6×12	2
1-8	80010040019	2955	Gear Case	1
1-9	02020160080	2122	Safety Guard	1
1-10	03020020053	2323	Screw M5×12	4
1-11	03090010013	0759	Bearing 6000/P5	1
1-12	02020090020	1615	Gear	1
1-13	02020090035	2704	Gear Shaft	1
1-14	03090010014	0761	Bearing 6002-2RS/P5	1
1-15	03120020001	4540	Stop Ring 32	1
1-16	02020100020	0765	Holder A	1
1-17	02020100012	4799	Holder B	1
1-18	03040050014	4544	Washer 10	1
1-19	03030010007	4380	Left Nut M10×1.25	1
1-20	03060020004	4581	Pin 2×16	2
1-21	61270020002		CLUTCH COMP.	1
1-22	02020050026	1642	CLUTCH DRUM COMP.	1
1-23	03120020004	4541	Stop Ring 35	1
1-24	03090010012	0758	Bearing 6202-2RS/P5	1
1-25	03120010005	4534	Stop Ring 15	1
1-26	80010030075	0722	Clutch Case	1
1-27	02080020069	1607	Rubber Cover	1
1-28	03010010058	9007	Screw M5×25	8
1-29	80010050068	2959	Clamp B	1
1-30	80010050049	2958	Clamp A	1
1-31	03010010060	9009	Screw M6×20	4
1-32	70030180133	1634	Harness Clamp	1
1-33	70030160007	1635	Clamp	1
1-34	03040030002	4413	Washer 5	1
1-35	03010060053	3310	Screw M5×20	1
1-36	02010010095	6116	Pipe (26*1.5*718)	1
1-37	02020060034	6121	Drive Shaft (703mm)	1
1-38	02040010003	0778	Oil-Bearing (8*14*14)	6
1-39	02080020006	0751	Rubber Cover	6
1-40	70080080015			1
1-41	03010040037	6495	SCREW ST2.9×10	1
1-42	70030070016	1245	BUTTON	1

1-43	02020110044	5796	SPRING	1
1-44	70030070092	1243	LOCKPIN	1
1-45	70030070062	1244	HANDGRIP	1
1-46	02020110028	5797	SPRING	1
1-47	70030070167	1199	BOX, RIGHT	1
1-48	03010040029	4318	SCREW ST2. 9×18	2
1-49	03010010064	9328	SCREW M5*27	1
1-50	02050040048	7553	CABLE COMP.	1
1-51	03030010004	1209	NUT M6	2
1-52	01040030002	0010	TUBE	1
1-53	02050050101	1400	STOP BUTTON COMP.	1
1-54	70030070202	1242	HANDGRIP	1
1-55	02020110029	5788	SPRING	1
1-56	70030070219	1246	BOX, LEFT	1
1-57	03030060008	4319	NUT M5	1
1-58	03040020015	3232	washer 6	1
1-59	80010050106	2979	CAP, UPPER	1
1-60	02020160511	3767	LEFT HANDGRIP	1
1-61	02080020097	1064	RUBBER COVER	1
1-62	02020160461	3768	RIGHT HANDGRIP	1
1-63	80010050059	3364	BRACKET	1
1-64	03050010012	5081	washer6	1
1-65	02020060036	6512	Drive Shaft (846mm)	1
1-66	80010050078	3363	CAP LOWER	1
1-67	02010010072	6494	Pipe (26*1. 5*798)	1
1-68	02050220013	7007	Nylon Cutter Head	1
1-69	03030010013	4419	GB6170 M5	2
1-70	03010010056	9008	Screw M5*14	2
1-71	70030030523	9208	Bracket	1
1-72	03010010062	5711	Screw M5*20	2
1-73	61270070012	3844	Harness Ass' y	1
1-74	70030030522	9209	Safety Guard	1
1-75	02010030001	3326	Spacer	2
1-76	03040020020	6536	Washer 5	4
1-77	03050010015	7813	Washer 5	4
1-78	03010110119	9211	Screw M5×20	4
1-79	03010040027	4264	Screw ST4. 2×16	1
1-80	70030030056	1275	Blade	1
1-81	03010040025	4262	Screw ST4. 2×13	2
1-82	02020070037	3645	Blade	1
1-83	02110030022	0013	Wire Clamp Band	2
1-84	02050060070	7249	Harness Ass' y	1
1-85	02060040025	7245	Blade	1
1-86	02110030004	3324	Blade guard	1
1-87	02040030003	8234	lock	2
1-88	02020160293	6114	shaft jion	1
1-89	70070090016	6106	pipe jion	1
1-90	03040020007	4473	washer 10	1
1-91	03060030005	5075	pin	1
1-92	70030180089	6460	bolt	1
1-93	03010010024	1169	bolt (M6×35)	1