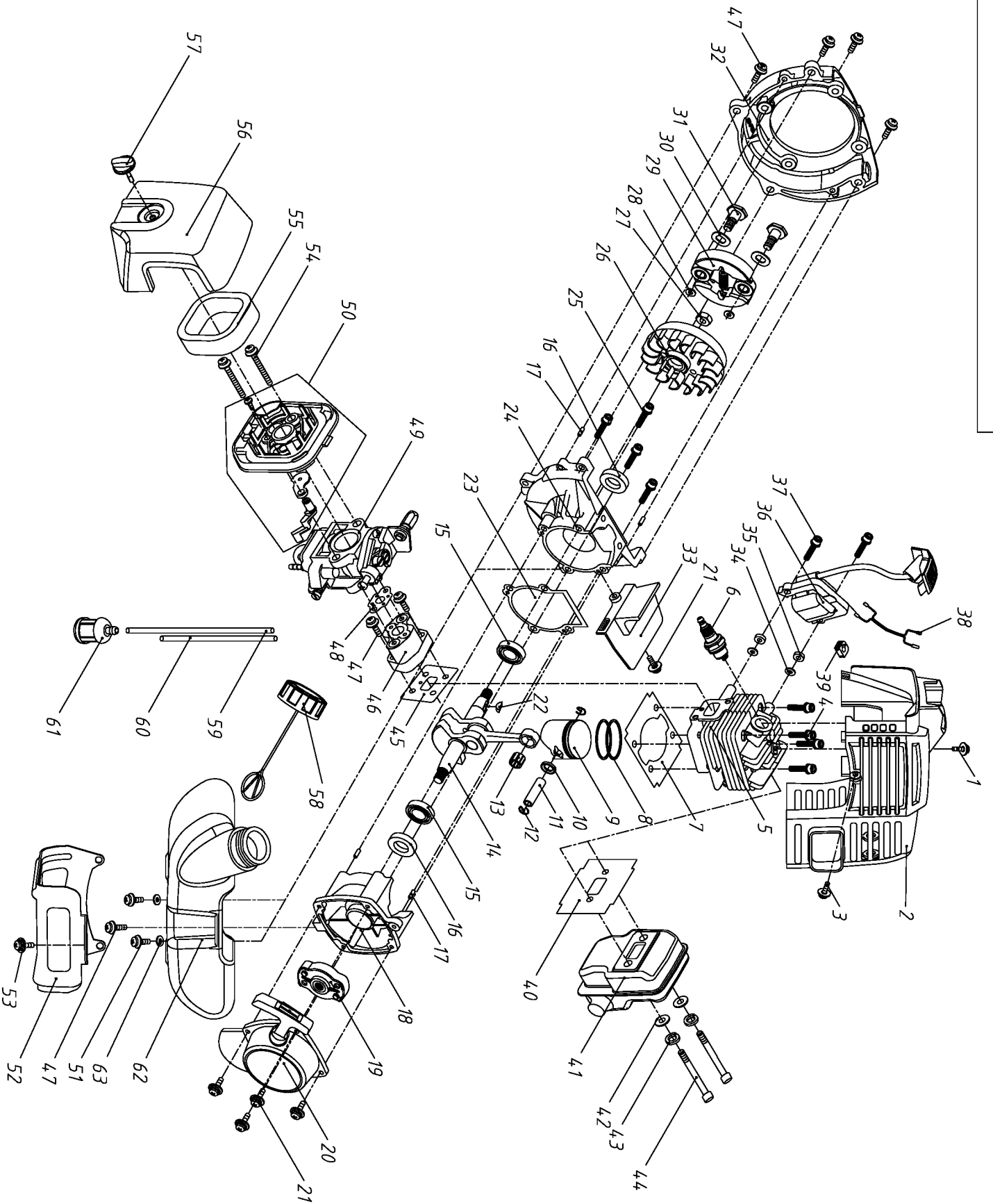


1E34FGA 分解图
1E34FGA GASOLINE ENGINE EXPLOSIVE PICTURE



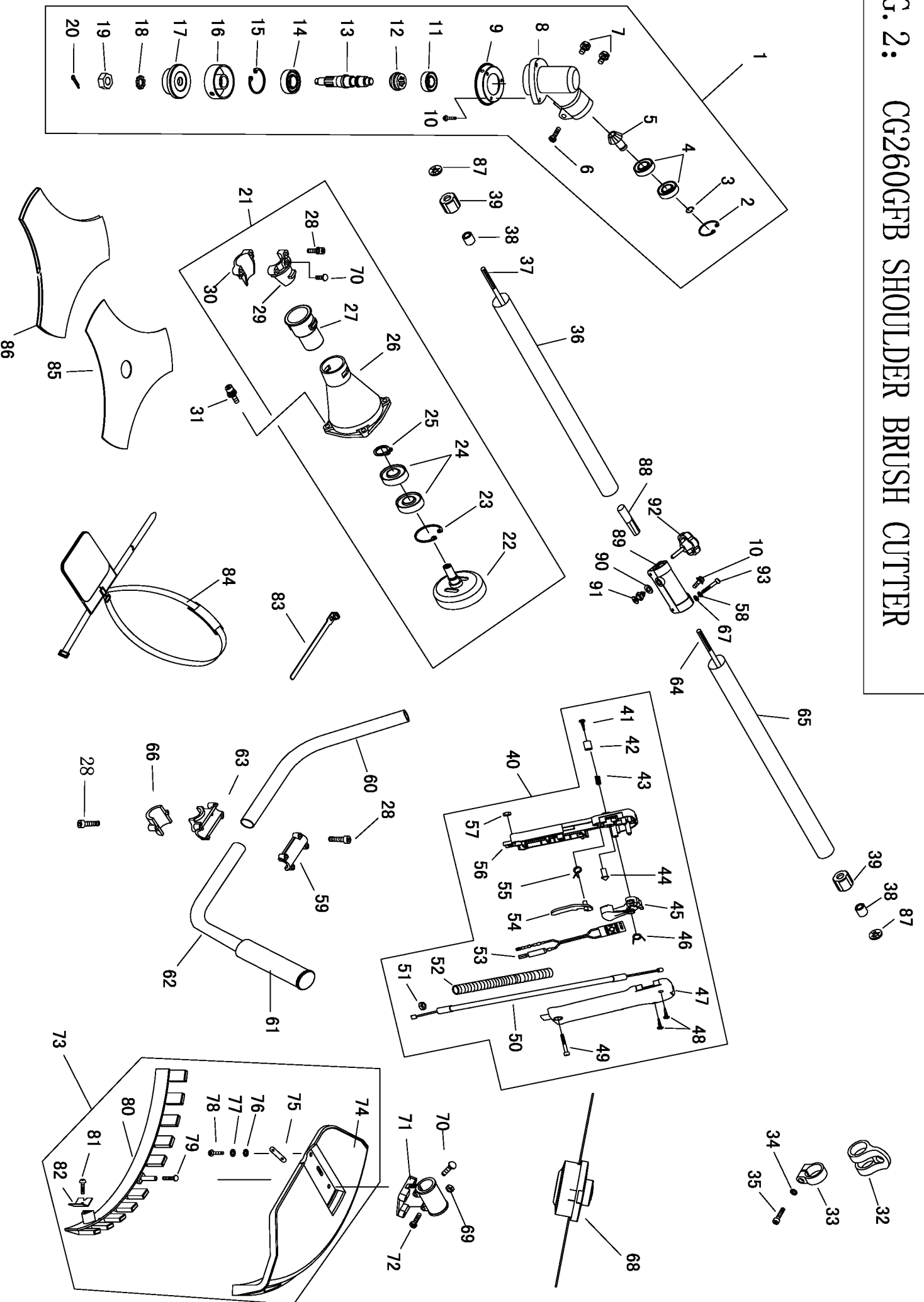
1E34FGA

Appendix List Engine Parts of Attached Fig.

Item	Part No.	ERP	Part Name	Qty
1	03010110007	4366	SCREW M5X12	1
2	70030030426	9483	COVER	1
3	03020020055	4265	SCREW ASSY M4X12	1
4	03010010062	5711	SCREW M5X20	4
5	70070130032	9317	GASKET, cylinder	1
6	03130010013	3480	PLUG	1
7	02070010032	0501	GASKET, cylinder	1
8	02020020003	0508	RING, piston	2
9	02010020005	0500	PISTON	1
10	02020150002	0512	STOP RING	2
11	02020010004	0513	PIN, piston	1
12	02020030017	4555	PISTON PIN CIRCLET	2
13	03090020018	0498	NEEDLE, bearing	1
14	02020120023	0499	CRANKSHAFT COMP.	1
15	03090010028	0473	BALL-BEARING	2
16	03100010009	0047	OIL SEAL	2
17	03060010002	4567	PIN B3X10	4
18	70070050038	0493	REAR HALF CRANKCASE	1
19	02050100015	3620	STARTER PULLEY ASSY	1
20	02050070009	4670	STARTER	1
21	03020020029	4360	SCREW ASSY M4X16	5
22	03070010001	4562	KEY	1
23	02070010119	0505	GASKET, crankcase	1
24	70070050039	0492	FRONT HALF CRANKCASE	1
25	03010010058	9007	SCREW M5X25	4
26	02050030018	1957	MAGNETO ROTOR	1
27	03030020003	4243	NUT M8X1	1
28	03040050052	4500	WASHER 6X15X1.2	2
29	02050160002	2492	CLUTCH ASSY	1
30	03040050042	4548	WASHER	2
31	02020130001	0510	CLUTCH STEP SCREW	2
32	80010020078	9445	FAN COVER	1
33	070030030164	0448	GUIDE PLATE	1
34	03040010008	4451	WASHER 4	2
35	02070010048	3477	Space, housing	2
36	02050030124	9319	MAGNETO ROTOR	1
37	03020020054	4242	SCREW M4X20	2
38	02050050213	9425	STOP CORD COMP.	1
39	02080020012	1622	Retaining Sleeve	1
40	02070010162	0502	GASKET, muffler	1
41	02050010015	0506	MUFFLER	1
42	03040020020	6536	WASHER 5	2
43	03050010015	7813	WASHER 5	2
44	03010010051	4247	SCREW M5X55	2
45	02070010019	0503	WASHER, cylinder side	1
46	070030020016	0741	INLET MANIFOLD	1
47	03020020012	1848	SCREW ASSY M5X20	6

48	02070010071	0518	GASKET, carburetor side	1
49	02050020101	2719	CARBURETOR	1
50	070080120007	1335	CLEANER OUTSIDE COVER	1
51	03020010012	4261	SCREW M5X16 GB9074.3	2
52	02020160564	9400	Bracket, fuel tank	1
53	03020020053	2323	SCREW M5X12	1
54	03020020044	5483	SCREW ASSY M5X55	2
55	02090010011	0745	FILTER	1
56	070030040123	9318	CLEANER OUTSIDE COVER	1
57	02110030079	4452	Knob	1
58	02110020026	7560	FUEL TANK CAP ASSY	1
59			INLET FUEL PIPE	1
60			OUTLET FUEL PIPE	1
61	02050120002	0554	CLEANER	1
62	070050030094	9315	FUEL TANK	1
63	03040050022	4109	WASHER 5	1

FIG. 2: CG260GFB SHOULDER BRUSH CUTTER



(T266 BRUSH CUTTER)

Ser. NO.	ERP part N	ERP Erp NO.	Part Name	Qty
1-1	61270030006	1987	GEAR CASE ASS'Y	1
1-2	03120020002	4536	Stop Ring 26	1
1-3	03120010001	4531	Stop Ring 10	1
1-4	03090010015	0762	Bearing 6000-2RS/P5	2
1-5	02020090072	2705	Pinion	1
1-6	03020030014	2322	Screw M5×25	1
1-7	03020030021	7550	Bolt M6×12	2
1-8	80010040011	2955	Gear Case	1
1-9	02020160080	2122	Safety Guard	1
1-10	03020020053	2323	Screw M5×12	4
1-11	03090010013	0759	Bearing 6000/P5	1
1-12	02020090020	1615	Gear	1
1-13	02020090035	2704	Gear Shaft	1
1-14	03090010014	0761	Bearing 6002-2RS/P5	1
1-15	03120020001	4540	Stop Ring 32	1
1-16	02020100020	0765	Holder A	1
1-17	02020100012	4799	Holder B	1
1-18	03040050014	4544	Washer 10	1
1-19	03030010007	4380	Left Nut M10×1.25	1
1-20	03060020004	4581	Pin 2×16	2
1-21	61270020023		CLUTCH COMP.	1
1-22	02020050019	1606	CLUTCH DRUM COMP.	1
1-23	03120020004	4541	Stop Ring 35	1
1-24	03090010012	0758	Bering 6202-2RS/P5	2
1-25	03120010005	4534	Stop Ring 15	1
1-26	80010030039	2951	Clutch Case	1
1-27	02080020069	1607	Rubber Cover	1
1-28	03010010058	9007	Screw M5×25	8
1-29	80010050068	2959	Clamp B	1
1-30	80010050049	2958	Clamp A	1
1-31	03010010060	9009	Screw M6×20	4
1-32	70030180133	1634	Harness Clamp	1
1-33	70030160007	1635	Clamp	1
1-34	03040030002	4413	Washer 5	1
1-35	03010060053	3310	Screw M5×20	1
1-36	02010010095	6116	Pipe (26*1.5*718)	1
1-37	02020060034	6121	Drive Shaft (703mm)	1
1-38	02040010003	0778	Oil-Bearing (8*14*14)	6
1-39	02080020006	0751	Rubber Cover	6
1-40		8524	lever ass'y	1
1-41	03010040037	6495	SCREW ST2.9×10	1
1-42	70030070016	1245	BUTTON	1

1-43	02020110044	5796	SPRING	1
1-44	70030070092	1243	LOCKPIN	1
1-45	70030070062	1244	HANDGRIP	1
1-46	02020110028	5797	SPRING	1
1-47	70030070167	1199	BOX, RIGHT	1
1-48	03010040029	4318	SCREW ST2.9×18	2
1-49	03010010064	9328	SCREW M5*27	1
1-50	02050040048	7553	CABLE COMP.	1
1-51	3030010004	1209	NUT M6	2
1-52	01040030002	0010	TUBE	1
1-53	02050050101	1400	STOP BUTTON COMP.	1
1-54	70030070202	1242	HANDGRIP	1
1-55	02020110029	5788	SPRING	1
1-56	70030070219	1246	BOX, LEFT	1
1-57	03030060008	4319	NUT M5	1
1-58	03040020015	3232	washer 6	1
1-59	80010050106	2979	CAP, UPPER	1
1-60	02020160512	3767	LEFT HANDGRIP	1
1-61	02080020097	1064	RUBBER COVER	1
1-62	02020160462	3768	RIGHT HANDGRIP	1
1-63	80010050059	3364	BRACKET	1
1-64	02020060036	6112	Drive Shaft (832mm)	1
1-65	02010010072	6111	Pipe (26*1.5*778)	1
1-66	80010050078	3363	CAP LOWER	1
1-67	03050010012	5081	washer6	1
1-68	02050220013	7007	Nylon Cutter Head	1
1-69	03030010013	4419	NUT M5	2
1-70	03010010056	9008	Screw M5*14	2
1-71	70030030523	9208	Bracket	1
1-72	03010010062	5711	Screw M5*20	2
1-73	61270070004	3844	Harness Ass'y	1
1-74	70030030522	9209	Safety Guard	1
1-75	02010030001	3326	Spacer	2
1-76	03040020020	6536	Washer 5	4
1-77	03050010015	7813	Washer 5	4
1-78	03010110119	9211	Screw M5×20	4
1-79	03010040027	4264	Screw ST4.2×16	1
1-80	70030030056	1275	Blade	1
1-81	03010040025	4262	Screw ST4.2×13	2
1-82	02020070037	3645	Blade	1
1-83	02110030022	0013	Wire Clamp Band	2
1-84	02050060019	4231	Harness Ass'y	1
1-85	02060040025	7245	Blade	1
1-86	02110030004	3324	Blade guard	1
1-87	02040030003	8234	lock	2
1-88	02020160293	6114	shaft jion	1
1-89	70070090016	6106	pipe jion	1
1-90	03040020007	4473	washer 10	1
1-91	03060030005	5075	pin	1
1-92	70030180089	6460	bolt	1
1-93	03010010024	1169	bolt (M6×35)	1