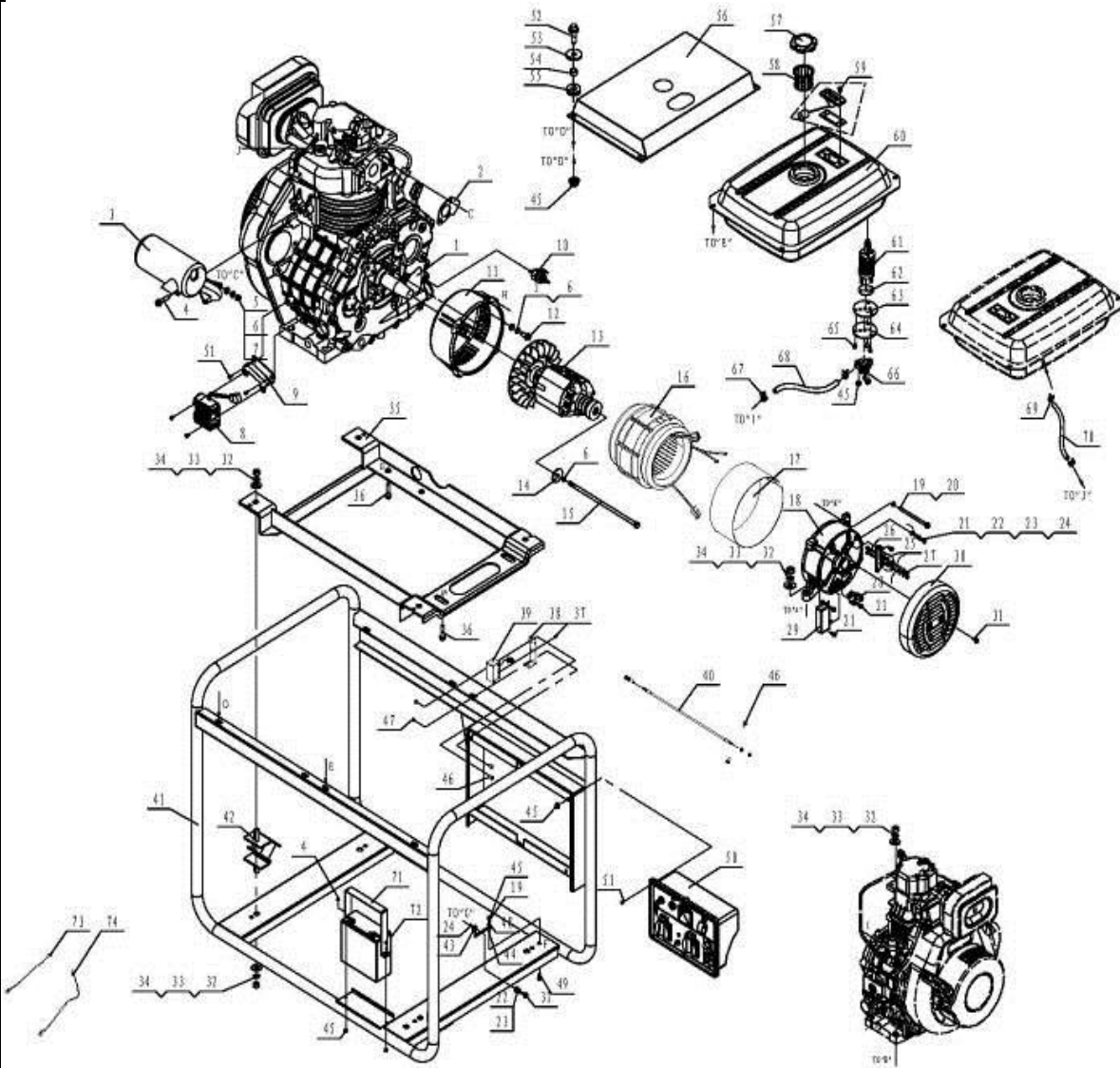


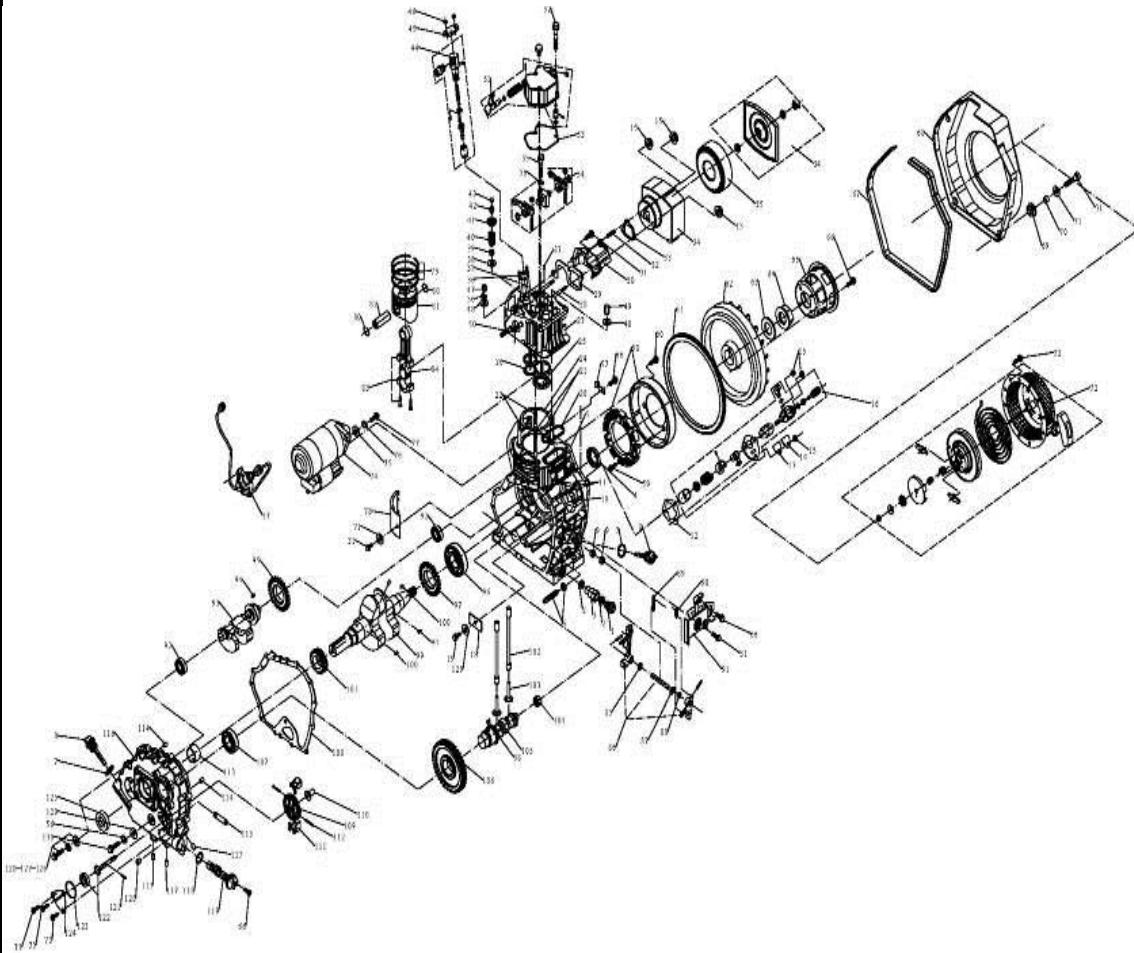
DG2200E DIESEL GENERATOR SPARE PARTS LIST



No.:02101000014

NO.	CODE	DESCRIPTION	DESCRIPTION	QTY.
1	01101000021	UD170-21机组动力状态+E	UD170 diesel engine	1
2	029049910300	消声器垫片-3	exhaust gasket	1
3	029043100001	1.7KW柴油机组消声器部件-01	muffler	1
4	511050601201	六角法兰面螺栓-加大系列-B级M6X12	flange bolt M6X12	4
5	513010800001	平垫圈-C级8	flat washer Φ8	6
6	513020800002	标准型弹簧垫圈8	spring washer Φ8	7
7	512040800001	带齿六角法兰面螺母M8	flange nut M8	2
8	019990000101	整流稳压器01	rectifier	1
9	019990000200	整流稳压器支架	rectifier bracket	1
10	029990000201	机油压力报警器 (单级)	low oil pressure annunciator	1
11	029030200307	190前端盖7	alternator front cover	1
12	511060803301	六角带齿法兰面螺栓-加大系列-B级M8X33.5	flange bolt M8X33.5	4
13	062024120002	2#线2.0KWDC有刷转子总成190*80(V1)卡簧	rotor assembly	1
14	513040800006	大垫圈-C级8	large flat washer Φ8	1
15	511080820001	英制六角普通螺栓-B级5/16-200 (24UNC)	rotor bolt 5/16X200	1
16	062024130001	2#线2.0KWDC有刷定子总成(230V/50HZ)	stator assembly	1
17	029030101300	电机护板620×70	protection board	1

18	029030430800	190后端盖8	alternator end cover	1
19	513020600002	标准型弹簧垫圈6	spring washer Φ6	5
20	511050612001	六角法兰面螺栓-加大系列-B级M6X120	flange bolt M6X120	4
21	511050501601	六角法兰面螺栓-加大系列-B级M5X16	flange bolt M5X16	6
22	513020500000	标准型弹簧垫圈5	spring washer Φ5	4
23	513010500001	平垫圈-C级5	flat washer Φ8	6
24	513030500000	外锯齿锁紧垫圈5	external tooth lock washer Φ5	2
25	029030500101	后端盖用接线架(橙色)	connection pole	1
26	511140502000	六角头螺栓C级-全螺纹M5X20	full-thread bolt M5X20	2
27	512010500001	六角螺母-C级M5	nut M5	4
28	029030700200	碳刷2	carbon brush	1
29	029030610201	3KW自动电压调节器 (AVR)	3KW AVR	1
30	029030300314	190后端盖罩1(亚光黑)	rear cover	1
31	511050501201	六角法兰面螺栓-加大系列-B级M5X12	flange bolt M5X12	3
32	513011000001	平垫圈-C级10	flat washer Φ10	14
33	513021000002	标准型弹簧垫圈10	spring washer Φ10	14
34	512011000000	六角螺母-C级M10	nut M10	14
35	021010000100	2KW柴油机架公共底座(黑)	combined foundation	1
36	511141004001	六角头螺栓C级-全螺纹M10X40	full-thread bolt M10X40	6
37	515050300802	开槽沉头螺钉M3X8	countersunk head bolt M3X8	4
38	029990000502	电磁铁支架	electromagnet bracket	1
39	029990000501	电磁铁	electromagnet	1
40	029990000903	油门拉线 180*250 (双头)	accelerograph rope	1
41	021010100001	DG2200 +E机架总成 (黑色)	frame	1
42	029910300401	4号机组减震垫	shock absorber	4
43	029930000801	接地线(12cm)φ6+φ6	grounding wire	1
44	513030600000	外锯齿锁紧垫圈6	external tooth lock washer Φ6	1
45	512040600001	带齿六角法兰面螺母M6	flange nut M6	17
46	515010400802	十字槽小盘头螺钉M4X8	fillister head bolt M4X8	4
47	512010400002	六角螺母-C级M4	nut M4	2
48	513010600001	平垫圈-C级6	flat washer Φ6	1
49	511050601401	六角法兰面螺栓-加大系列-B级M6X14	flange bolt M6X14	1
50	029025500060	5号控制面板总成(德式-俄文)DG2200+E+DC	control panel assembly	1
51	515010601202	十字槽小盘头螺钉M6X12	fillister head bolt M6X12	8
52	511050602501	六角法兰面螺栓-加大系列-B级M6X25	flange bolt M6X25	8
53	513040600000	大垫圈-C级6	large flat washer Φ6	8
54	019990007800	引风板衬套	bush	8
55	019990008000	引风板隔震垫块	damping mat	8
56	029060100108	2KW柴油机组上盖板(黄)	cover	1
57	029019901102	机组铁油箱盖-02	fuel tank cup	1
58	029019900601	机组油箱过滤杯-01	filter cup	1
59	029019930000	长形油标总成	fuel marker assembly	1
60	029010200105	11.5升油箱 (108C黄)	fuel tank	1
61	011010004300	柴油滤清器	diesel oil filter element	1
62	019990009500	柴油滤清器垫片	diesel oil filter element gasket	1
63	029019920300	联接盘垫片B	connection gasket B	1
64	029019920400	联接盘垫片(铁片)	connection gasket(metal)	1
65	515010500802	十字槽小盘头螺钉M5X8	fillister head bolt M5X8	3
66	019990009400	油箱开关(单机)	fuel tank switch	1
67	029019900402	φ13带式油管卡箍	clamp Φ13	2
68	029019900200	输油管φ7.5	fuel pipe Φ7.5	0.3
69	029019900401	φ8带式油管卡箍	clamp Φ8	2
70	029019900100	回油管φ4.5	fuel pipe Φ4.5	0.4
71	029960900301	电瓶压板20AH	battery fixed support	1
72	029960300100	电瓶20AH	battery	1
73	029969900219	电瓶线(黑色)250MM	battery wire(black)	1
74	029969900221	电瓶线(红色)250MM	battery wire(red)	1



No.:01101000021

NO.	CODE	DESCRIPTION	DESCRIPTION	QTY.
1	019990007000	放油螺塞	Oil drain bolt	1
2	019990007100	放油螺塞垫片	Oil drain bolt washer	2
3	029990000101	柴油机组放油接管 (长)	Oil drain pipe	1
4	522010100801	旋转轴唇形密封圈 (F) B3045	Oil sealing	1
5	011010000100	曲轴箱	Crankcase	1
6	019990011800	油量控制器	Fuel capacity controller	1
7	523010100300	液压气动用O形橡胶密封圈26X3.55G	O-type ring 26X3.55G	2
8	011010000200	机油尺	Oil distick	2
9	521030100101	滚针轴承7941/8	Needle bearing 7941/8	2
10	019990007200	喷油泵紧固螺柱 (短)	Fuel injection pump studs (short)	1
11	019990007300	喷油泵紧固螺柱 (长)	Fuel injection pump studs (long)	2
12	019990007400	喷油泵垫片	Fuel injection pump gasket	1
13	019990007500	喷油泵密封垫片	Fuel injection pump sealing board gasket	1
14	019990007600	喷油泵密封板	Fuel injection pump sealing board	1
15	512040600002	带齿六角法兰面螺母M6	Tooth flange nut M6	8

16	019990012900	喷油泵总成（机组）	Fuel injection pump assy (used in generator)	1
17	011010004400	高压油管部件	High pressure fuel pipe	1
18	019990007700	止推片	Thrust pad	1
19	511050801203	六角法兰面螺栓-B级 M8X12	Bolt M8X12	1
20	011010000900	气缸盖密封圈	Cylinderhead sealing	1
21	011010000800	气缸盖螺柱（长）	Cylinderhead studs (long)	2
22	011010000300	气缸盖螺柱（短）	Cylinderhead studs (short)	2
23	514010400800	圆柱销-不淬硬钢和奥氏体不锈钢4X8	Pin 4X8	1
24	011010000600	气缸盖垫片	Cylinderhead gasket	1
25	011010001800	进气门	Inlet valve	1
26	011010001900	排气门	Outlet valve	1
27	011010001700	气缸盖部件	Cylinderhead	1
28	516030605503	双头螺柱B型M6X55	Stud M6X55	2
29	011010001600	进气口垫片	Inlet gasket	1
30	011010004000	进气管	Inlet pipe	1
31	511050602203	六角法兰面螺栓-B级 M6X22	Bolt M6X22	5
32	019990008700	空滤紧固螺栓	Air cleaner bolt	1
33	019990012300	空气滤清器垫片	Air filter gasket	1
34	019990012400	空滤外壳	Air filter shell	1
35	019990012500	空滤滤芯	Air filter	1
36	011010004800	隔热套	Insulation cladding	1
37	516030605003	双头螺柱B型M6X50	Stud M6X50	2
38	019990012000	气门弹簧垫圈	Valve spring washer	2
39	522010101601	旋转轴唇形密封圈（F）B0509	Oil sealing B0509	1
40	011010002000	气门弹簧	Valve spring	2
41	011010002100	气门弹簧座	Valve spring seat	2
42	011010002400	气门锁夹	Valve lock clamps	2
43	011010002300	气门调节垫块	Valve adjust cushion block	2
44	011010500000	喷油嘴总成	Fuel injector	1
45	019990008300	喷油器压板	Fuel injector platen	1
46	512030600002	六角法兰面螺母M6	Nut M6	2
47	011010000700	气缸盖螺母（长）	Cylinder head nut (long)	2
48	011010000400	气缸盖螺母垫片	Cylinder head nut washer	4
49	011010000500	气缸盖螺母（短）	Cylinder head nut (short)	2
50	516030802003	双头螺柱B型M8X20	Stud M8X20	2
51	011010700000	气缸盖罩总成	Cylinder head cover	1
52	511050605503	六角法兰面螺栓-B级 M6X55	Bolt M6X55	2
53	011010004900	气缸盖罩垫片	Cylinder head cover gasket	1
54	011010100000	气门摇臂总成	Rocker arm	1
55	011010002200	气门摇臂支座紧固螺栓	Rocker arm bolt	1
56	513020800002	标准型弹簧垫圈8	Elasticity washer 8	6
57	019990010600	压板（电启动）	Wire platen	1
58	019990010500	飞轮发电机（电启动）	Flywheel generator	1
59	515050601203	开槽沉头螺钉M6X12	Screw M6X12	3
60	511050601803	六角法兰面螺栓-B级M6X18	Bolt M6X18	3
61	011010003300	飞轮齿圈	Flywheel gear	1
62	011010003400	飞轮(电启动)	Flywheel	1
63	011020003300	飞轮螺母垫圈	Flywheel nut washer	1
64	011020003400	飞轮螺母	Flywheel nut	1
65	011010003500	起动套	Starting flange	1
66	511050601203	六角法兰面螺栓-B级 M6X12	Bolt M6X12	10
67	019990010200	导风罩减震垫	Wind hood shock pad	0.127
68	011010004703	导风罩焊接件(黑)	Wind hood (black)	1
69	019990010300	导风罩减震套	Wind hood shockcover	4
70	019990010400	导风罩衬套（10×10）	Bushing 10×10	4
71	513040600002	大垫圈-C级6	Washer 6	5

72	011010600002	手拉盘总成(黑)	Recoil starter assy (black)	1
73	511050600803	六角法兰面螺栓-B级 M6X8	Bolt M6X8	4
74	019990010700	起动电机(电起动)	Electronic starter	1
75	513011000002	平垫圈-C级10	Washer 10	2
76	513021000002	标准型弹簧垫圈10	Easticity washer 10	2
77	511051003503	六角法兰面螺栓-B级 M10X35	Bolt M10X35	2
78	011010001100	引风板(单机)	Wind board	1
79	011010200000	活塞环总成	Piston ring set	1
80	518041900000	孔用钢丝挡圈19	Piston pin circlip	2
81	011010002500	活塞	Piston	1
82	011010002600	活塞销	Piston pin	1
83	011010300000	连杆总成	Connect rod assy	1
84	011010002700	连杆轴瓦	Connect rod bearing	1
85	011030006102	拨叉杠杆轴垫圈1.5mm	Fork shaft washer 1.5mm	1
86	011010400000	拨叉总成	Fork assy	1
87	011030006101	拨叉杠杆轴垫圈1.0mm	Fork shaft washer 1.0mm	2
88	522010101301	旋转轴唇形密封圈(F) B0814	Oil sealing B0814	1
89	019990012800	调速弹簧	Speed governing spring	1
90	019990011400	回位弹簧II	Reset spring	1
91	019990011500	调速手柄总成(双档)(机组)	Speed governing assy	1
92	521010010601	深沟球轴承60000型15	Bearing 6202	2
93	011010002800	平衡轴	Balance shaft	1
94	519010100500	普通平键A型5X5X7	Flat key 5X5X7	2
95	011010002900	平衡轴齿轮	Balance gear	1
96	521010010901	深沟球轴承60000型30	Bearing 6306	1
97	011010003200	平衡轴传动齿轮	Balance shaft transmission gear	1
98	519010100700	普通平键A型5X5X14	Flat key 5X5X14	1
99	011010003101	曲轴V1	Crankshaft V1	1
100	519010100600	普通平键A型5X5X12	Flat key 5X5X12	2
101	011010003000	曲轴正时齿轮	Crankshaft timing gear	1
102	011010003600	气门推杆	valve tappet	2
103	011010003700	气门挺柱	valve lifter	2
104	521030100201	滚针轴承37941/15	Needle bearing 37941/15	1
105	011010003900	凸轮轴	Camshaft	1
106	011010003800	凸轮轴正时齿轮	Camshaft timing gear	1
107	521010010501	深沟球轴承60000型25	Bearing 6205	1
108	011010001200	曲轴箱盖垫片	Crankcase cover gasket	1
109	019990008900	机油泵转动齿轮	Oil pump gear	1
110	019990011100	调速推盘	Speed governing push dish	1
111	019990010900	飞锤	Flying hammer	2
112	019990010800	飞锤销	Flying hammer pin	2
113	011010001300	滑动轴承	Sliding bearing	1
114	514010801200	圆柱销-不淬硬钢和奥氏体不锈钢8X12	Pin8X12	2
115	019990009100	进油导管	Oil absorption pipe	1
116	011010001400	曲轴箱盖	Crankcase cover	1
117	019990008200	铝堵塞φ8	Aluminum end cap φ8	3
118	523010100500	液压气动用O形橡胶密封圈25×2.4G	O ring 25×2.4G	1
119	019990009000	机油滤清器总成	Oil filter	1
120	011030005600	内六角螺塞	Inside hexagonal screw	1
121	514010301600	圆柱销-不淬硬钢和奥氏体不锈钢3X16	Pin 4X8 3X16	1
122	019990012600	机油泵总成	Oil pump	1
123	523010100400	液压气动用O形橡胶密封圈34.5×1.8G	O ring 34.5×1.8G	1
124	019990008800	机油泵盖板	Oil pump cover	1
125	522010100701	旋转轴唇形密封圈(F) B2542	Oil sealing B2542	1
126	511050603203	六角法兰面螺栓-B级 M6X32	Bolt M6X32	14

127	513020600002	标准型弹簧垫圈6	Elasticity washer 6	14
128	513010600002	平垫圈-C级6	Washer 6	14
129	513010800002	平垫圈-C级8	Washer 8	1
130	511050803803	六角法兰面螺栓-B级 M8X38	Bolt M8X38	1