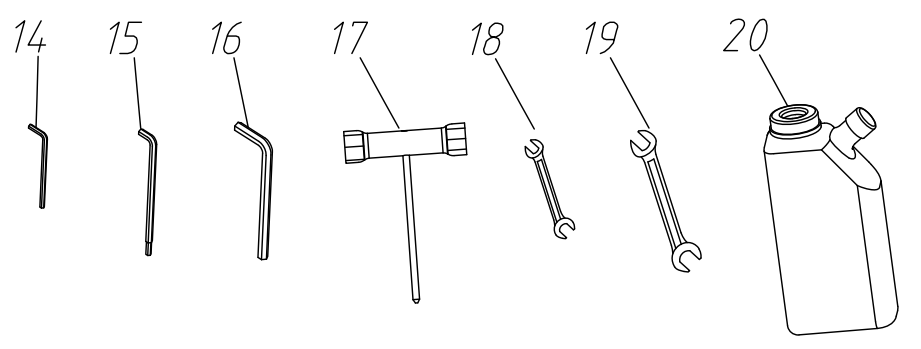
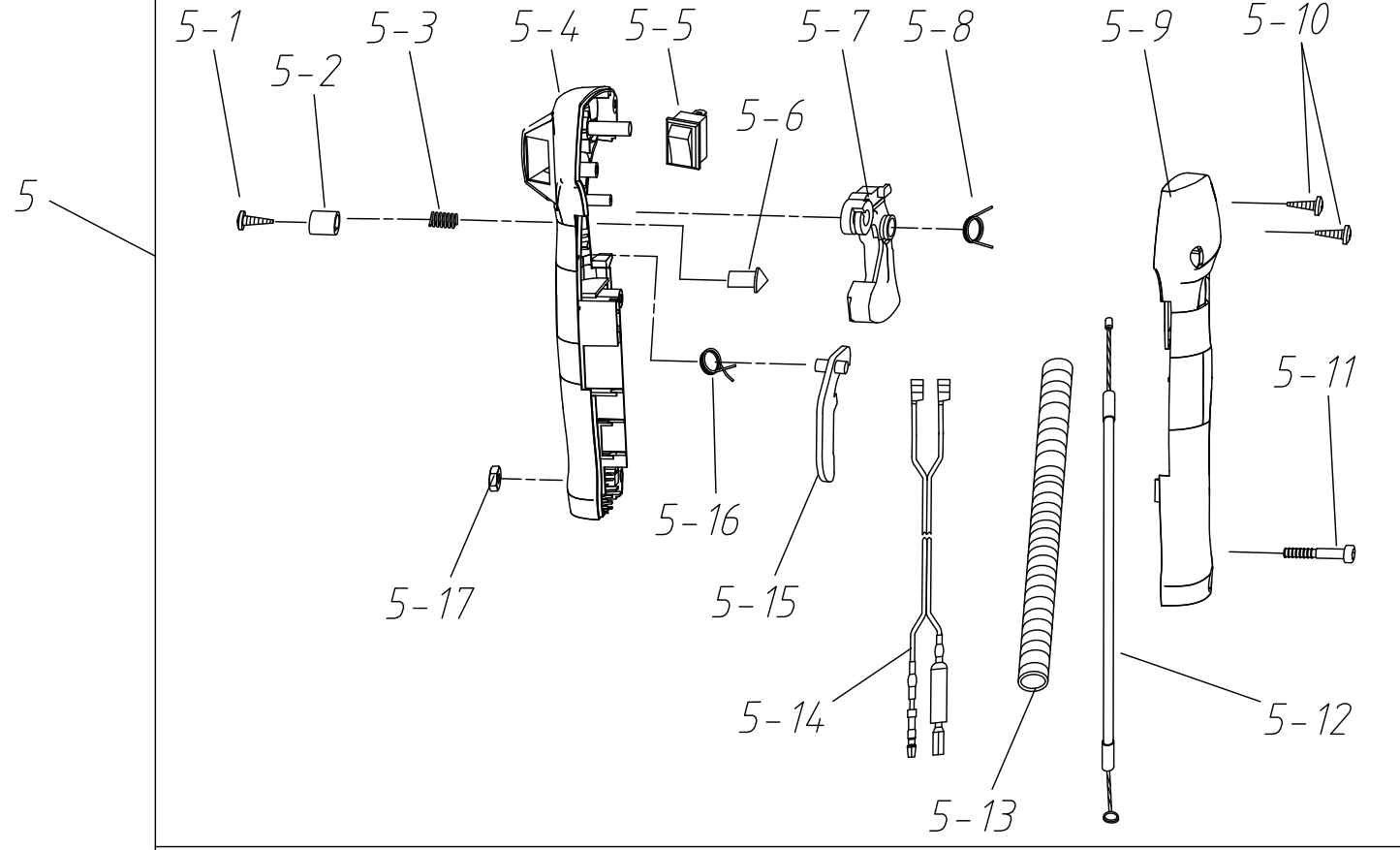
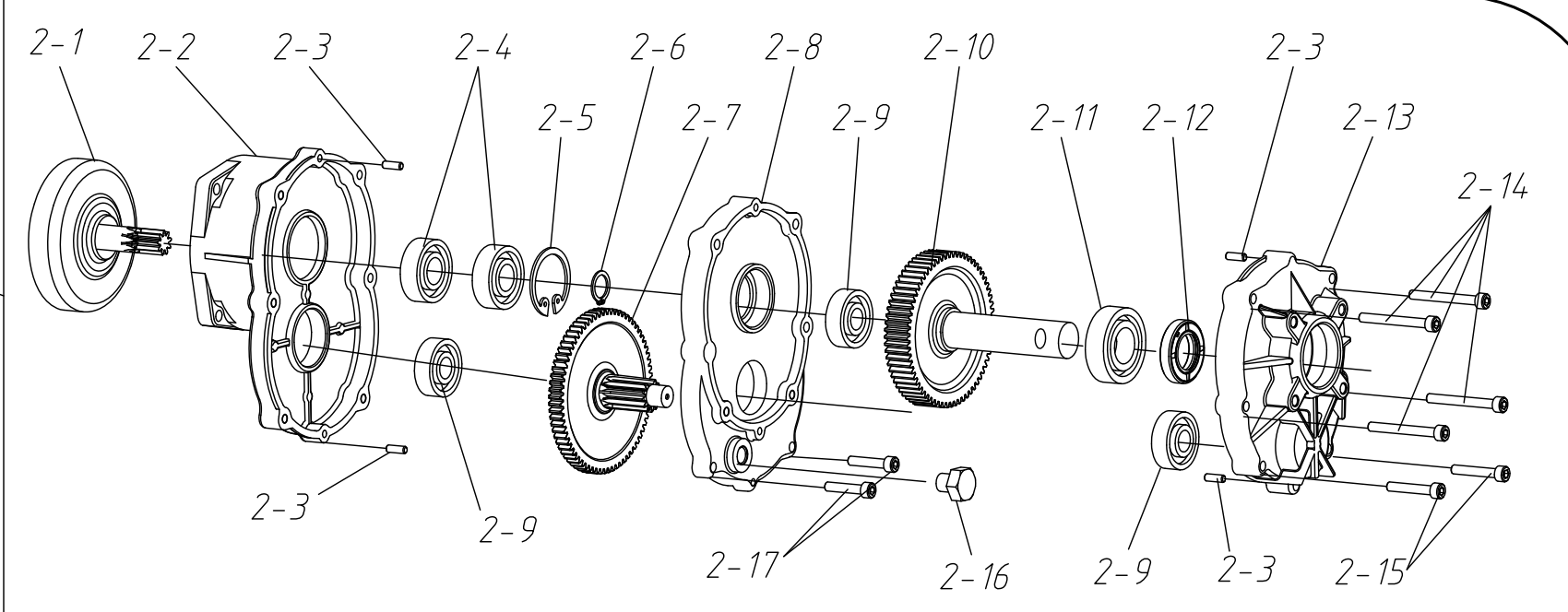
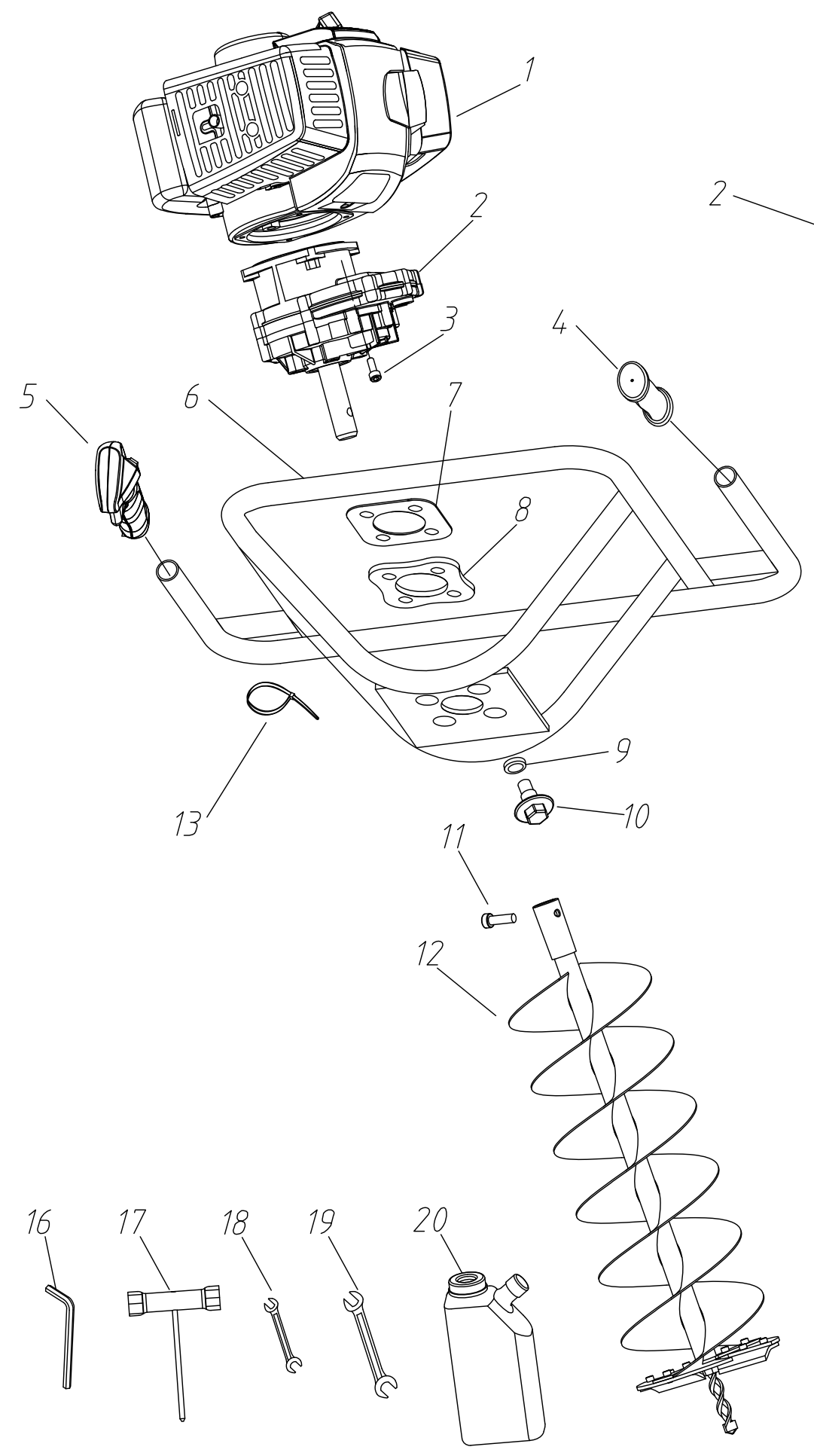
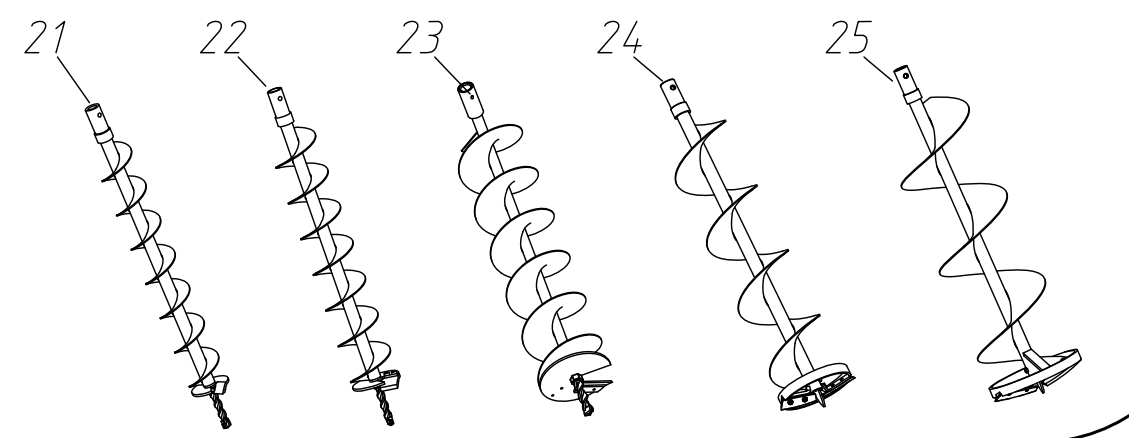


AG52 MODEL ENGINE POWER DRILL EXPLODED VIEW



Optional accessories



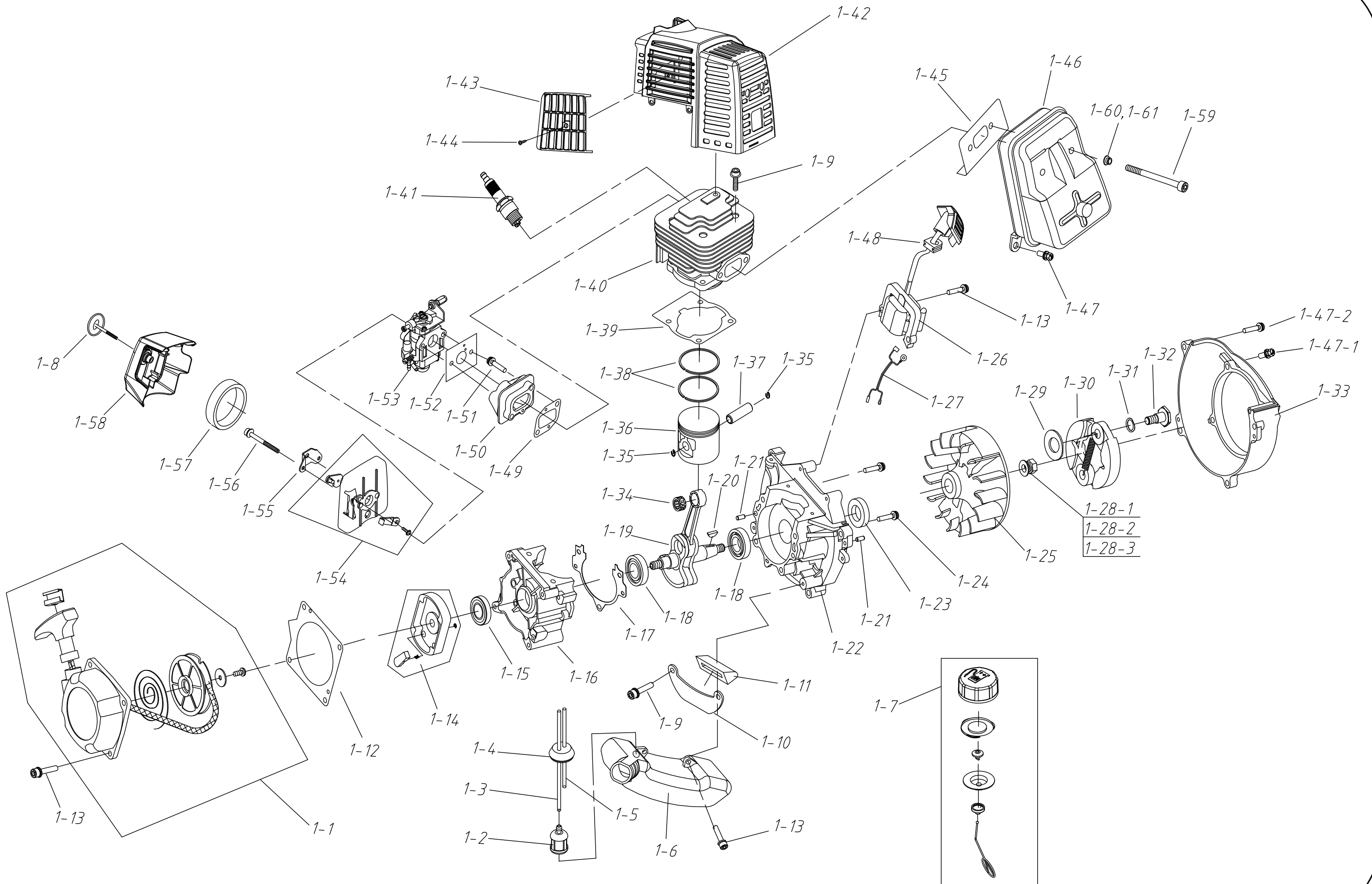
AG52 MODEL ENGINE POWER DRILL PARTS LIST

序号	ERP编码	名称	Part Name	数量
1	51010260017	半成品汽油机 1E44FGA	Engine assembly	1
2	70080070035	变速箱组合	Gear box assembly	1
2-1	02020050015	被动盘焊合	Clutch bowl assembly	1
2-2	70070080035	变速箱上盖	Gear box housing top	1
2-3	03060010004	圆柱销 4×10	Position Pin 4×10	4
2-4	03090010012	轴承 6202-2RS/P5	Ball bearing 6202-2RS/P5	2
2-5	03120020004	挡圈 Φ35	Hole circlip Φ35	1
2-6	03120010005	挡圈 Φ15	Shaft circlip Φ15	1
2-7	80020030001	一级齿轮组合	Primary gear assembly	1
2-8	70070080036	变速箱中盖	Gear box housing middle	1
2-9	03090010034	轴承 6201/P5	Ball Bearing 6202/P5	3
2-10	80020030002	二级齿轮组合	Secondary gear assembly	1
2-11	03090010009	轴承 6004/P5	Ball bearing 6004/P5	1
2-12	03100010004	油封 20×35×7	Sealing ring 20×35×7	1
2-13	70070080034	变速箱下盖	Gear box housing bottom	1
2-14	03010010033	内六角螺钉 M5×45	screw M5×45	4
2-15	03010010046	内六角螺钉 M5×30	screw M5×30	2
2-16	03010110037	非标M10螺栓	screw M10×10	1
2-17	03010010011	内六角螺钉 M5×25	screw M5×25	2
3	03010010013	螺钉 M6×20	screw M6×20	4
4	02080020102	橡胶手把	Auxiliary handle	1
5	70080080044	操纵盒组合	Control handle assembly	1
5-1	03010040036	自攻螺钉 ST2.9×10	screw ST2.9×10	1
5-2	70030070016	按钮 黄116C	Half-throttle lock button	1
5-3	02020110044	锁紧弹簧	Lock spring	1
5-4	70030070218	左操纵盒	Left control handle housing	1
5-5	02050050115	停车开关组合 黄116C	stop button comp	1
5-6	70030070092	锁紧销	Lock pin	1
5-7	70030070062	操纵手柄 黄116C	Throttle trigger	1
5-8	02020110028	长扭簧	Throttle trigger spring	1
5-9	70030070166	右操纵盒	Right control handle housing	1
5-10	03010040038	自攻螺钉 ST3.5×16	screw ST3.5×16	2
5-11	03010010045	螺钉 M5×30	screw M5×30	1
5-12	02050040020	油门绳	cable comp	1
5-13	01040030001	波纹管 (Φ8.1×11.7)	tube(Φ8.1×11.7)	1
5-14	02050050155	停车线	Cut-off wire set	1
5-15	70030070202	自锁手柄 黄116C	Lock off lever	1
5-16	02020110029	自锁扭簧	Lock off spring	1
5-17	03030060007	防松螺母 M5	nut M5	1
6	02050210002	操纵架组合	Handle bracket	1
7	02500010006	变速箱底垫板	Gear box big washer	1
8	02080010027	减震橡胶垫	Shock absorber pad	1
9	02080010028	减震橡胶套	Shock absorber ring	4
10	03010110038	非标M8螺钉	screw M8	4
11	03010010081	螺钉 M8×30	screw M8×30	1
12	02020080003	钻头组合 (200mm)	Drill bit Φ200mm	1
13	02110030022	黑扎线	fixed belt	1
14	03080010004	内六角扳手S=4mm	Alley key S=4mm	1
15	03080010005	非标内六角扳手S=5mm	Short Alley key S=5mm	1
16	03080010008	内六角扳手S=6mm	Alley key S=6mm	1
17	03080030004	十字双头套筒 17×19	Box spanner 13×19	1
18	03080020007	呆扳手 8×10	Open spanner 8×10	1
19	03080020002	呆扳手 13×16	Open spanner 13×16	1
20	70080010001	18改型油瓶组合 (1L)	Fuel mixture bottle (1L)	1

Optional accessories

21	02020080032	钻头组合 (直径80mm)	Drill bit Φ80mm	
22	02020080033	钻头组合 (直径100mm)	Drill bit Φ100mm	
23	02020080034	钻头组合 (直径150mm)	Drill bit Φ150mm	
24	02020080017	冰钻头 (Φ150mm)	Ice Drill bit Φ150mm	
25	02020080018	冰钻头 (Φ200mm)	Ice Drill bit Φ200mm	

1E44FGA GASOLINE ENGINE XPLODED VIEW



1E44FGA GASOLINE ENGINE PARTS LIST

序号	ERP编码	名称	Part Name	数量
1-1	02050070024	启动器组合 1E40F-5A	Starter	1
1-2	02050120002	燃油过滤器 1E34F.9-4	Fuel filter	1
1-3	01040010014	输油管 φ2.4×φ4.5	Black Fuel Pipe φ2.4×φ4.5	1
1-4	02080030025	油管胶塞 1E34F	Fuel pipe plug	1
1-5	01040010003	回油管 φ2.5×φ4.5	Clear Fuel Pipe φ2.5×φ4.5	1
1-6	70050030019	油箱 1E40F-5AX-1	Fuel Tank	1
1-7	02110020026	油箱盖组合 37F	Fuel Tank cap assembly	1
1-8	02110030079	旋扭 1E40F-5GA-05	Knob	1
1-9	03010010062	内六角组合 M5×20	Socket Head Screw M5×20	4
1-10	02020160439	油箱挂架 1E40F-5A-4	Fuel tank rack	1
1-11	02080020087	油箱挂架胶套 1E36F-2A	Fuel tank rack pad	1
1-12	02010030018	启动器衬垫 1E40F-5-10	Starter gasket	1
1-13	03020020012	螺钉组合 M5×20	Screw M5×20	8
1-14	02050100006	启动拨盘组合 1E40F-5A	Starter clutch assembly	1
1-15	03100010009	油封 1E36F φ12×22×7	Oil sealing φ12×22×7	1
1-16	70070050054	后半曲轴箱 40F-5A	Rear half crank Case	1
1-17	02070010124	曲轴箱密封垫 1E40F-5A	Crank case gasket	1
1-18	03090010016	滚动轴承 6202/P5 GB/T276	Ball Bearing 6202/P5	2
1-19	02020120062	曲轴连杆组合 1E44F.2.1	Crank Shaft assembly	1
1-20	03070010002	半圆键 3×5×13 GB/T1099.1	Half round key 3×5×13	1
1-21	03060010004	圆柱销 GB119 4×10	Position Pin 4×10	4
1-22	70070050055	前半曲轴箱 40F-5A	Front half crank case	1
1-23	03100010024	油封 φ15×30×7	Oil sealing	1
1-24	03010010069	内六角螺钉组合 M5×30	Socket Head Screw M5×30	4
1-25	02050030088	磁电机转子 1E44F	Ignition Rotor Comp	1
1-26	02050030118	磁电机定子 1E40F-5GA	Ignition Coil Comp	1
1-27	02050050181	停车线 1E40F-3B	Cut-off wire set	1
1-28-1	03030010017	螺母 GB6170 M8×1.25	Lock Nut M8×1.25	1
1-28-2	03040020018	垫圈 GB/T97.1 8	Washer φ8	1
1-28-3	03050010008	垫圈 GB/T93 8	Washer φ8	1
1-29	03040050048	垫圈B 1E36F-3	Washer φ8	2
1-30	02050160006	涨紧块组合	Expander Combination	1
1-31	03040050043	波形垫圈 φ10×14	Wave Washer φ10×14	2
1-32	02020130003	螺钉轴 1E40F-5-12	Clutch bolt	2
1-33	70070030022	风扇罩 1E40F-5GA	Fan Cover	1
1-34	03090020023	小头滚针轴承 1E44F.2-4	Needle Bearing	1
1-35	02020030014	活塞销挡圈 1E40F.1-6	Piston pin circlip	2
1-36	02010020016	活塞 1E44F.2-1	Piston	1
1-37	02020010012	活塞销1E44F.2-3 φ10×36.5	Piston Pin φ10×36.5	1
1-38	02020020010	活塞环 1E44F.2-2	Piston Ring	2
1-39	02070010037	缸体密封垫 1E40F-5A	Cylinder Gasket	1
1-40	02010050018	缸体 1E44F-1	Cylinder	1
1-41	03130010013	火花塞 RC16Y	Spark Plug RC16Y	1
1-42	70030030507	缸体护罩 黄116C	Cylinder Cover	1
1-43	70030030562	导风罩 黄116C	Engine Heat Deflector	1
1-44	03010040068	自攻丝 ST4.2×12	Screw ST4.2×12	1
1-45	02070010165	消音器密封垫 1E40F-5A	Muffler Gasket	1
1-46	02050010046	消音器组合 1E44FA-DCH	Muffler assembly	1
1-47-1	03020030016	螺栓组合 GB/T9074.13 M5×10	Bolt assy M5×10	2
1-47-2	03020030014	螺栓组合 GB/T9074.13 M5×25	Bolt assy M5×25	4
1-48	02080030006	高压线胶塞 1E36F-2A	Plug	1
1-49	02070010086	进气管垫 1E40F-5A	Insulator Gasket	1
1-50	70030020015	进气管 1E40F-5A	Insulator tube	1
1-51	03020020034	螺钉组合 M5×25	Screw M5×25	2
1-52	02070010073	化油器密封垫 1E40F-5A	Carburetor Gasket	1
1-53	02050020105	化油器 H119-6A	Carburetor H119-6A	1
1-54	70030040012	空滤器内罩组合 1E40F-5A	Air filter base assembly	1
1-55	02020160533	挡油板焊合 1E40F-5GA.1	Air filter inner plae	1
1-56	03010010075	内六角螺钉组合 M5×55	Socket Head Screw M5×55	2
1-57	02090010044	海绵滤芯 1E40F-5GA-06	Air filter sponge	1
1-58	70030040107	空滤器外罩 1E40F-5GA-02	Air filter cover	1
1-59	03010010036	内六角螺钉 M6×55	Socket Head Screw M6×55	2
1-60	03050010012	弹垫 φ6	Spring washer φ6	2
1-61	03040020015	平垫 φ6	Flat washer φ6	2